



# VILLAGE ESTATES

• EST.1993 •



93 Main Road, Sidcup, Kent DA14 6ND

Tel: 0208 302 1002

[www.village-estates.com](http://www.village-estates.com)

Email: [sidcup@village-estates.com](mailto:sidcup@village-estates.com)



**LEASE LENGTH OVER 100 YEARS**

**DOUBLE BEDROOMS**

**0.8 MILES TO NEW ELTHAM TRAIN  
STATION**

**FRENCH DOORS TO SMALL PRIVATE  
PATIO**

**EN SUITE TO MASTER BEDROOM**

**ALLOCATED PARKING SPACE**



**Flat 4 The Grange**  
**293-295 Main Road**  
Sidcup, DA14 6QL

**Fixed £325,000**

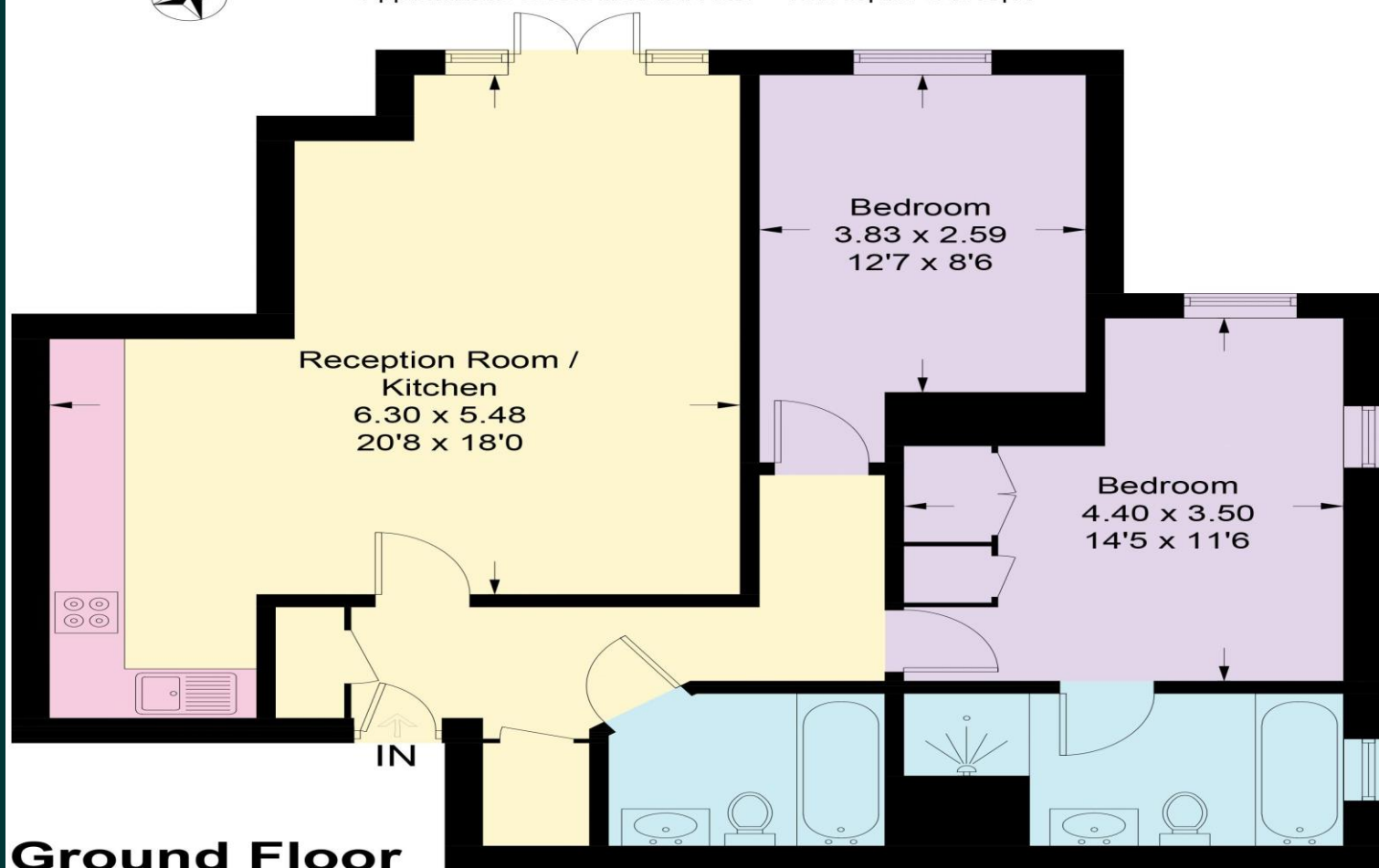


Offered to the market with NO FORWARD CHAIN is this stunning contemporary apartment, found on the ground floor within a popular modern development, 'The Grange' includes TWO DOUBLE BEDROOMS (master bedroom with fitted wardrobes and en suite bathroom room), additional LARGE BATHROOM and a large OPEN PLAN LIVING room with FRENCH DOORS TO A SMALL PATIO. The property further benefits from an ALLOCATED PARKING SPACE and video entry telephone phone system. This attractive home is positioned moments away from local amenities and within easy reach of NEW ELTHAM TRAIN STATION (Zone 4), providing fantastic links into London Bridge and Cannon Street.



## Main Road, Sidcup, DA14

Approximate Gross Internal Area = 78.2 sq m / 842 sq ft



## Ground Floor

### CONSUMER PROTECTION FROM UNFAIR TRADING REGULATIONS 2008

Please note that any services, heating system or appliances have not been tested, and no warranty can be given or implied as to their working order. You are advised to obtain verification from your solicitor or surveyor. References to the tenure of a property are based on information supplied by the seller. We have not had sight of the title documents and a buyer is advised to obtain verification from their solicitor. Items shown in photographs are not included unless specifically mentioned within the sales particulars, but may be available by separate negotiation. Whilst every attempt has been made to ensure the accuracy of the floor plan contained here, measurements of doors, windows, rooms and any other items are approximate and no responsibility is taken for any error, omission, or mis-statement. We advise you to book an appointment to view before embarking on any journey to see a property, and check its availability. The accuracy of these details are not guaranteed and they do not form part of the contract.